

Characteristic



Descriptions

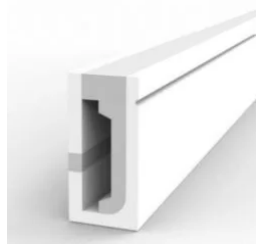
Alpha (Indoor/Outdoor) Series

- Uniform (single-bin), long-lasting (LM80) mono-color LED Flex
- Wide variety of applications including commercial signs and architectural lighting
- Bright, high-quality, and energy efficient 3528 LED chips
- UV, saltwater, & solvent resistant silicon
- Flat(F12), Dome(D23) and Square(F1616) profile to meet design requirements
- DIY installation & accessories• Water and dust resistant (IP67)
- Up to 30ft continuous length (dual power-feed)
- 2-Year Limited Warranty

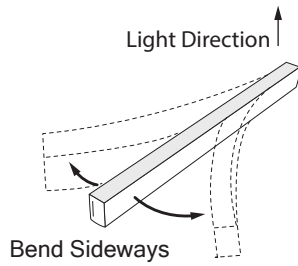
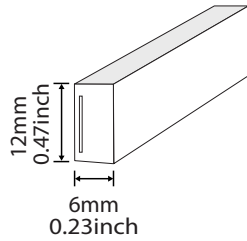
Optical & Electrical Parameters

Color	<input checked="" type="checkbox"/> 3000K	<input type="checkbox"/> 6000K		
Lumen Output/Meter	1410 lm	1510 lm		
Color	<input checked="" type="checkbox"/> Red	<input checked="" type="checkbox"/> Green	<input checked="" type="checkbox"/> Blue	<input checked="" type="checkbox"/> Amber
Wave Length(nm)	620-625	515-525	465-470	600-610
Material:	Silicone			
Work Temperature	-20~60°C			
Working Humidity	40%-70%RH			
Protection Rating	IP67			
Working Voltage	12V DC	24V DC		
Power Requirement	9.6W / m (2.93W / ft)	14.4W / m (4.37W / ft)		
Max Length (Dual Feed)	10m (32.8ft)	20 / m (65.6W / ft)		
Max Length (Single Feed)	5m (16.4ft)	10 / m (32.8W / ft)		

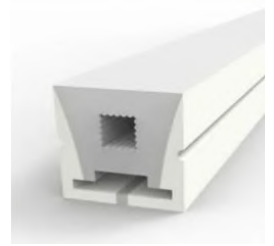
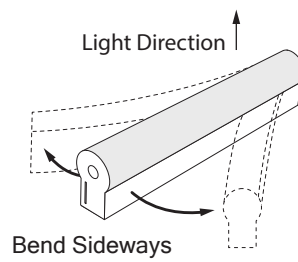
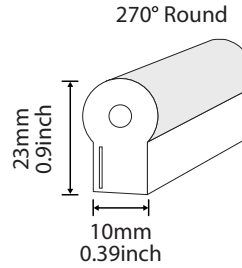
Physicals



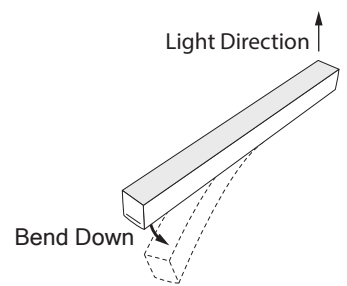
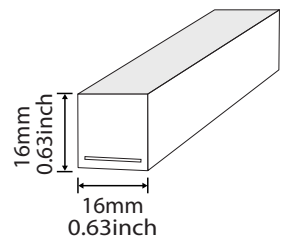
F0612 Profile



D1023 Profile

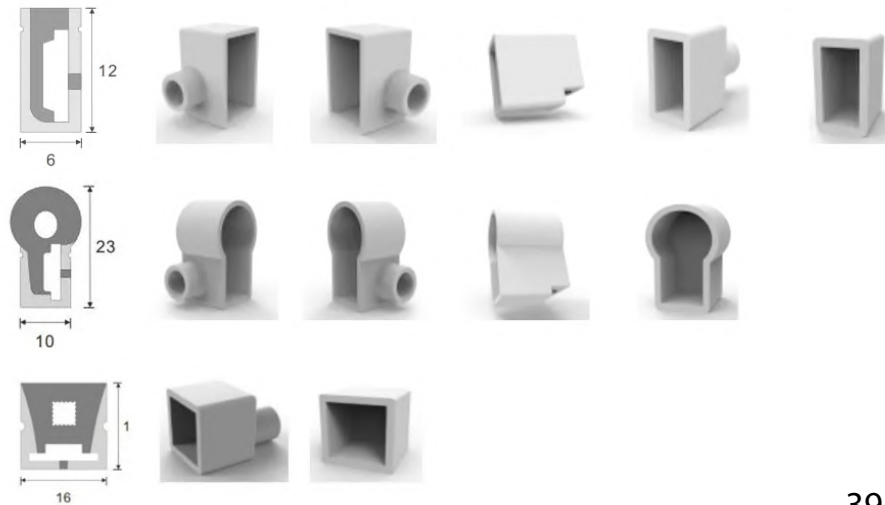


T1616 Profile



Accessories

Silicone end caps



Aluminum mounting tracks

